

## Technical data

	operation when directly connected to chimney		operation when connected accumulation mass	
	cupola	hot air exchanger	cupola	adaptor
Energy label	<b>A</b>	<b>A+</b>	<b>A+</b>	<b>A+</b>
<b>Operating data</b>				
Nominal heat power	6 kW	9 kW	----	----
Efficiency	> 80 %	> 80 %	----	----
Consumption of wood	1,8 kg/h	2,6 kg/h	6 kg	6 kg
Total heat output of the burning chamber	----	----	24 kW	24 kW
Average heat output / heat accumulation time <sup>5</sup>	----	----	2,4 kW / 8 h	2,4 kW / 8 h
Mass flow of flue gas	6,1 g/s	7,5 g/s	20 g/s	20 g/s
Required chimney pressure	12 Pa	12 Pa	12 Pa	15 Pa
Required amount of combustion air	20 m <sup>3</sup> /h	25 m <sup>3</sup> /h	55 m <sup>3</sup> /h	55 m <sup>3</sup> /h
<b>Average flue gas temperature</b>				
on the output	232 °C	255 °C	414 °C	423 °C
behind 4 m of ceramic accumulation system KMS 300 <sup>1</sup>	----	----	181 °C	----
behind accumulation rings (5x acc. ring Ø440mm)	----	----	----	242 °C
<b>Heat distribution</b>				
fireplace insert	74–84 %	74–84 %	40 %	34 %
door glass (single / double)	26 / 16 %	26 / 16 %	26 / 16 %	26 / 16 %
additional accumulation mass	----	----	34–44 %	40–50 %
<b>Information for ventilated builds</b>				
Minimal grill area supply / outgoing	600 / 700 cm <sup>2</sup>	900 / 1050 cm <sup>2</sup>	900 / 1050 cm <sup>2</sup>	900 / 1050 cm <sup>2</sup>
Minimum distance from insulated areas / floor	80 / 0 mm		80 / 0 mm	
Reference insulation <sup>2</sup> ceiling / back wall / side wall / floor	120 / 80 / 80 / 0 mm		120 / 80 / 80 / 0 mm	
Calciumsilicate insulation <sup>3</sup> ceiling / back wall / side wall / floor	90 / 60 / 60 / 0 mm		90 / 60 / 60 / 0 mm	
<b>Information for non-ventilated builds (closed grills)</b>				
Minimum radiant area <sup>4</sup>	suitable		5 m <sup>2</sup>	
Minimum distance from insulated areas / floor	80 / 20 mm		80 / 20 mm	
Reference insulation <sup>2</sup> ceiling / back wall / side wall / floor	160 / 100 / 100 / 20 mm		160 / 100 / 100 / 20 mm	
Calciumsilicate insulation <sup>3</sup> ceiling / back wall / side wall / floor	120 / 75 / 75 / 20 mm		120 / 75 / 75 / 20 mm	
<b>General technical information</b>				
Total weight / lining weight	circa 183 / 78 kg		circa 183 / 78 kg	
Burning chamber dimensions (width x depth)	305 x 355 mm			
Combustion air connection	Ø 150 mm			
Use in non-ventilated accumulation builds according to craft rules	suitable			
Tested according to	EN 13229			
Meets values	1. BlmSchV (Stufe2), 15a BVG			

<sup>1</sup> Listed value from testing. For accurate results is evaluation of each system in the Ortnr / KOV program necessary

<sup>2</sup> Mineral wool according to AGI-Q 132

<sup>3</sup> Example SkamoEnclosure Board 225 kg/m<sup>3</sup>

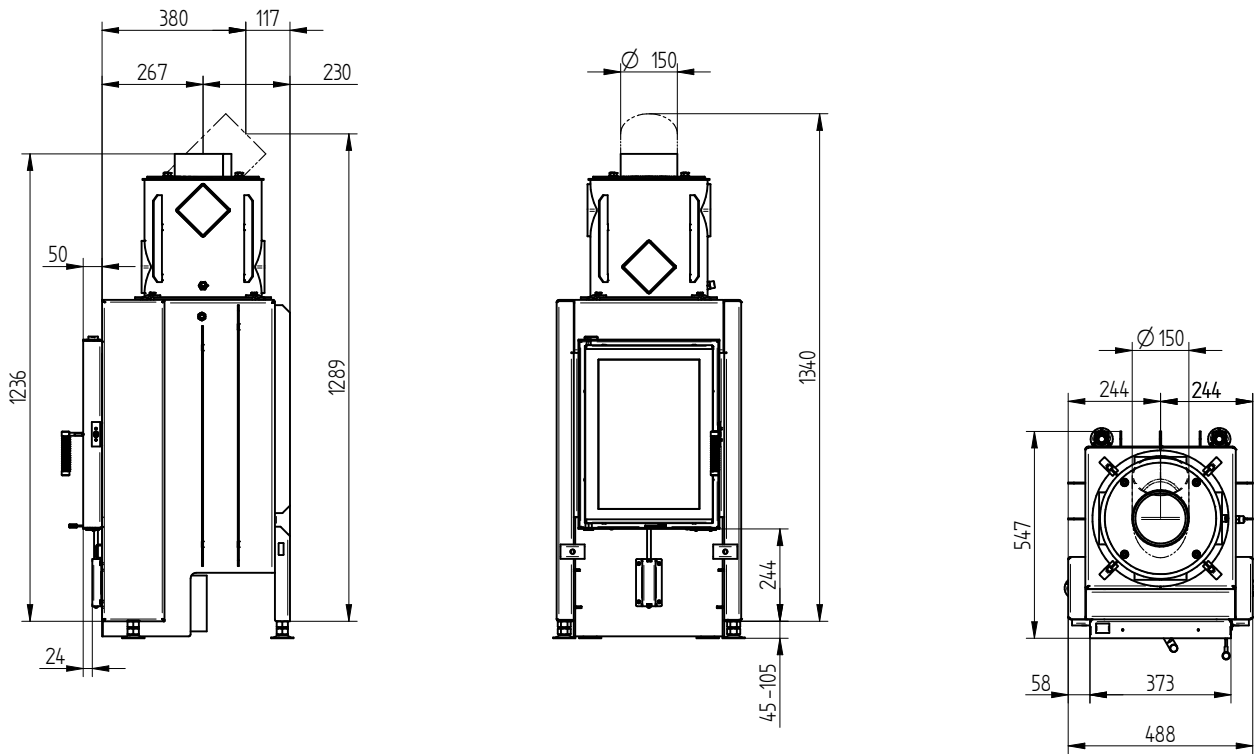
<sup>4</sup> Depends on accumulation period and material characteristics. Listed values calculated with average specific heat output = approx. 500 W/m<sup>2</sup>

<sup>5</sup> Storage operation, one wood charge for storage duration, with closed construction and efficiency > 80%

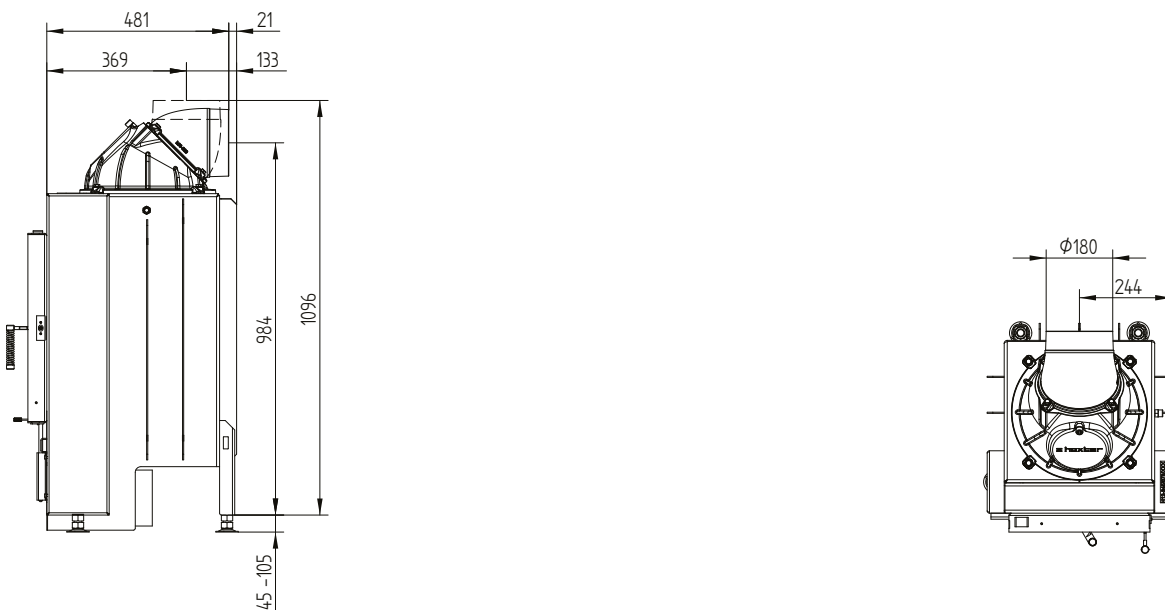
# HAKA 37/50G

Technical data  
Version 09/2023

## HAKA 37/50G deep chamber hot air exchanger vertical / smoke outlet 45°



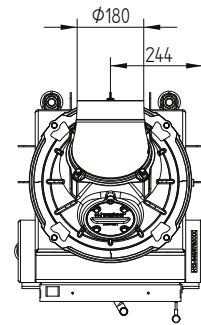
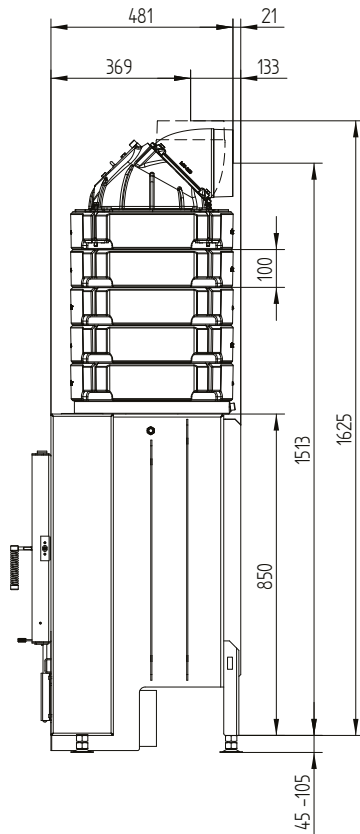
## HAKA 37/50G deep chamber cupola



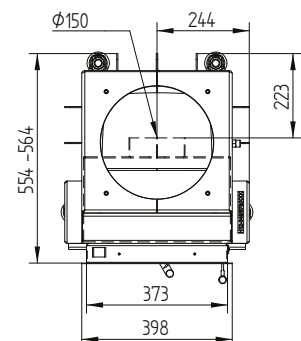
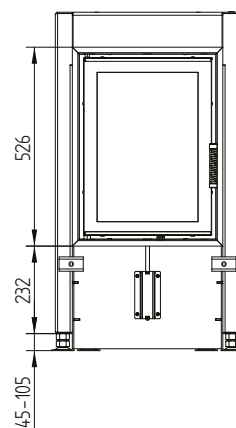
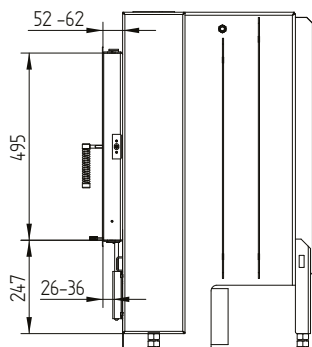
# HAKA 37/50G

Technical data  
Version 09/2023

## HAKA 37/50G deep chamber accumulation set



## Cover frame 37/50 side opening 4sides 50 mm x 90° / air inlet

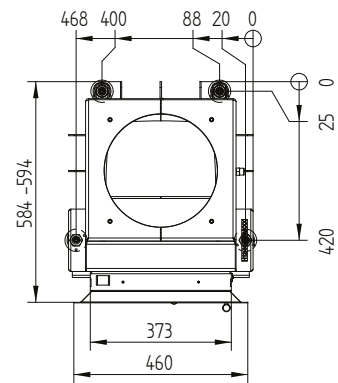
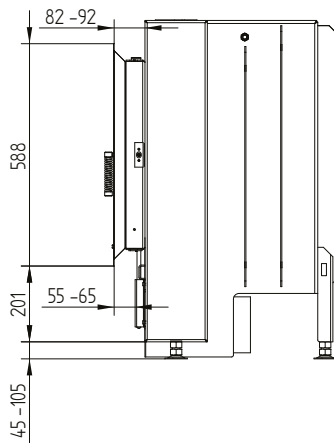


# HAKA 37/50G

Technical data  
Version 09/2023

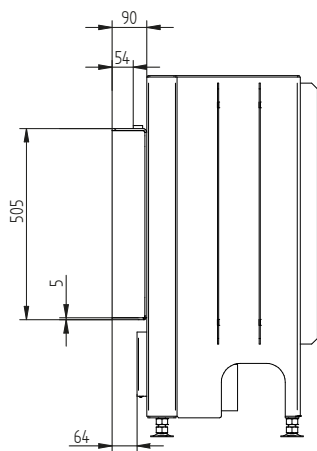
Cover frame 37/50 side opening 4sides 80 mm 2 x 45° / feet

---



Door frame 37/50 90 mm thick. 5 mm

---



M 1:20